

ASAHI-LITE®

JAPANESE QUALITY EYEGLOSS LENSES

ASAHILITE.COM

orders@asahilite.com

NOW AVAILABLE IN NORTH AMERICA

WE FOCUS ON INNOVATION & SIMPLICITY

ULTRA THIN. ULTRA LITE. ASAHI-LITE.

ASAHI-LITE by HYALOS
7118 Randolph Avenue
Burnaby BC V5J 4W6

T: 1-877-456-7888
F: 1-855-777-8444
E: info@asahilite.com



CORPORATE OVERVIEW

UNIQUE STATE-OF-THE-ART TECHNOLOGY & DESIGNS

ADAPTIVE FOCUS TECHNOLOGY: Digital media challenges the adaptability of the eyes. Optimization of near and intermediate visual fields reduces visual fatigue, neck pain and headache.

CONTINUUM DESIGN TECHNOLOGY: Surface shape calculations are done over the whole surface of the lens rather than certain set points. Result: Up to 4 times more high definition resolution than other Freeform technology lenses.

RAYTRACING: This technique traces rays of light through the lens to optimize the shape. Results in the best possible front and back shape for the prescription.

SMART BLENDING TECHNOLOGY: This circular blending process gradually reduces the peripheral thickness of the lens, as if it were a handcrafted piece. Result: optimum thickness for the frame type, prescription and lens diameter.

SMART FIT TECHNOLOGY: Takes the "Position of Wear" and frame geometric shape into consideration. Results in 40% reduction in thickness and a custom made lens in the carving process.

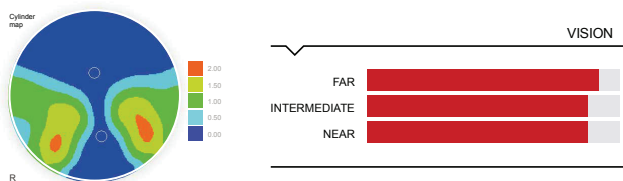
PREMIUM DIGITAL FREE FORM PROGRESSIVE LENSES

ASAHI•ME™

FOR THE DISCERNING PROGRESSIVE WEARER

OPTIMIZED CLARITY IN ALL ZONES: You're unique, so you need a lens that is perfectly tuned to you. With this custom made lens, all zones (distance, intermediate and near) are made to measure to be perfect for you.

CUSTOMIZED MEASUREMENTS AND UNIQUE TO YOU: Bespoke luxury, top performance.

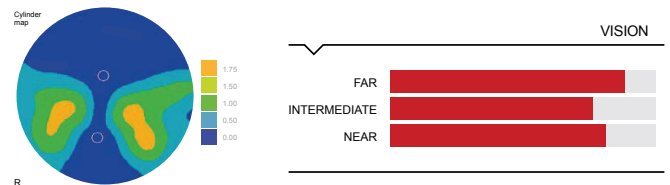


ASAHI•OPTIMIST™

FOR HIGH QUALITY AND ACCURACY

EASY TO WEAR IN ALL ENVIRONMENTS: This design is optimized for maximum clarity in all zones based on wearer's lifestyle. Available in soft (near), blended (balanced) and hard (distance) focused designs.

LIFESTYLE CUSTOMIZATION: Increases visual acuity by 33% over conventional lenses.



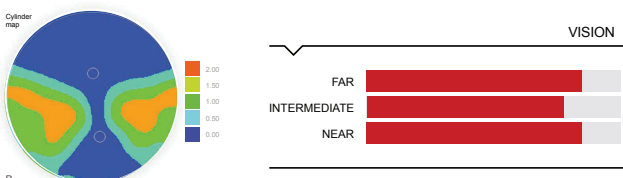
PERFORMANCE DIGITAL FREE FORM PROGRESSIVE LENSES

ASAHI•PREMIER

UNIQUE CUSTOMIZABLE DESIGN

INNOVATIVE TECHNOLOGY: Improves lens performance in any gaze direction.

MINIMIZED DISTORTIONS: Minimum lateral astigmatism in the periphery, extraordinary dynamic vision.

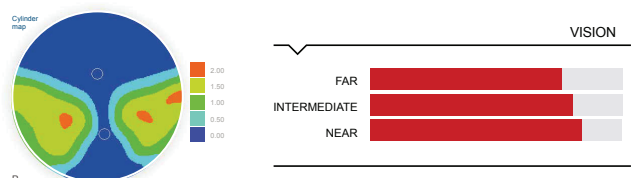


ASAHI•ADVANCED

EFFICIENCY AND COMFORT AT ALL DISTANCES

MULTIPUTPOSE DESIGN: Perfect for those looking for a lens that fits their daily routine.

BALANCED PROGRESSIVE: Instant adaptation and great spherical constancy in near zone. Distortions pushed out to periphery.



Japanese quality with decades of experience in innovation and lens creation.

TASK SPECIFIC LENSES

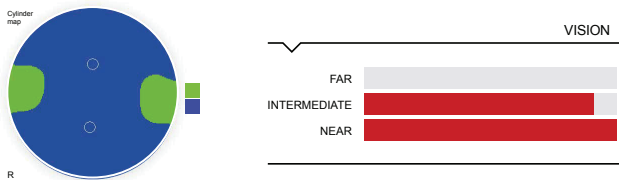
ASAHI•WORK™

PERFECT FOR THE OFFICE WORKER

HELPS RELIEVE NECK AND BACK PAIN, HEADACHES & STRESSED, TIRED EYES: By providing a wider range for near and intermediate vision.

VISUAL COMFORT: An easy transition from your books, to your computer to your desk.

SEAMLESS OPTICS: For your workspace with 3 digressions to choose from.

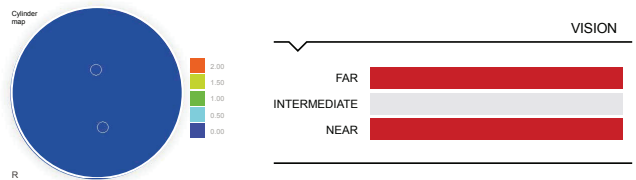


ASAHI•ENDURA™

FOR FOR HARD WORKING EYES THAT ARE TOO YOUNG FOR PROGRESSIVES

SLIGHT MAGNIFICATION ON LOWER PORTION OF LENS: A slight power variation to help relieve eye strain and provide more comfort even after several hours periods looking at a fixed distance.

ADDITION RANGE: (0.50-1.00)

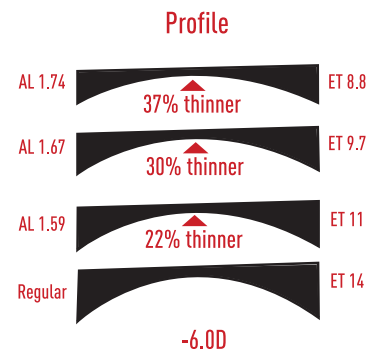
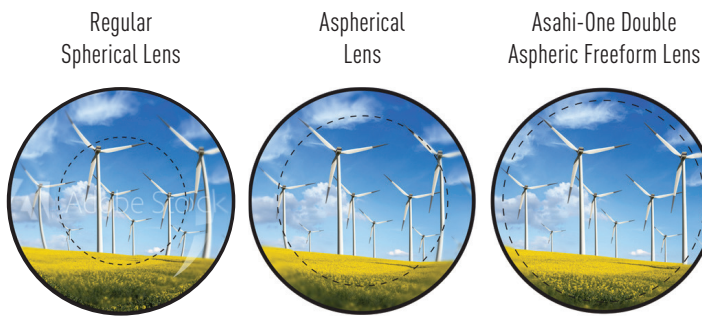


STOCK SINGLE VISION LENSES (CONVENTIONAL AND DIGITAL)

We have the widest range of sphere/cylinder combinations in every index and every material. Our Photositions material combines rapid photochromic performance with UV420 protection. Our NIR material protects the sensitive skin around the eyes from harmful infra-red rays.

DOUBLE ASPHERIC FREEFORM STOCK LENS

Our Double Aspheric Freeform Stock lens design combines an Aspheric front side and an Atoric back side providing a thinner, lighter lens with greater clarity, less distortion and improved comfort. Available in Poly, 1.67 and 1.74 material.



COATINGS & MATERIALS

RAYSAFE: Stay safe with Raysafe! This is not a coating, but a material that is almost colourless and offers protection from UV 400 - 420nm emitted by TVs, computers, smartphones and the sun. All Raysafe lenses come with ULTRON Super Hydrophobic AR coating.

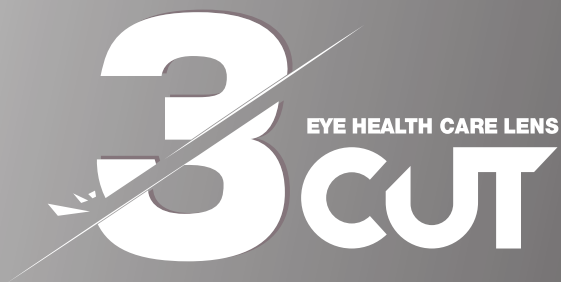
PHOTOSITIONS: Solar power lenses! Indoors and out— your “Everywhere lens”. Fast to dark, fast to clear, easy on the eyes.

PEARLON AR: Glare free anti-reflective, water repellant and dust resistant.

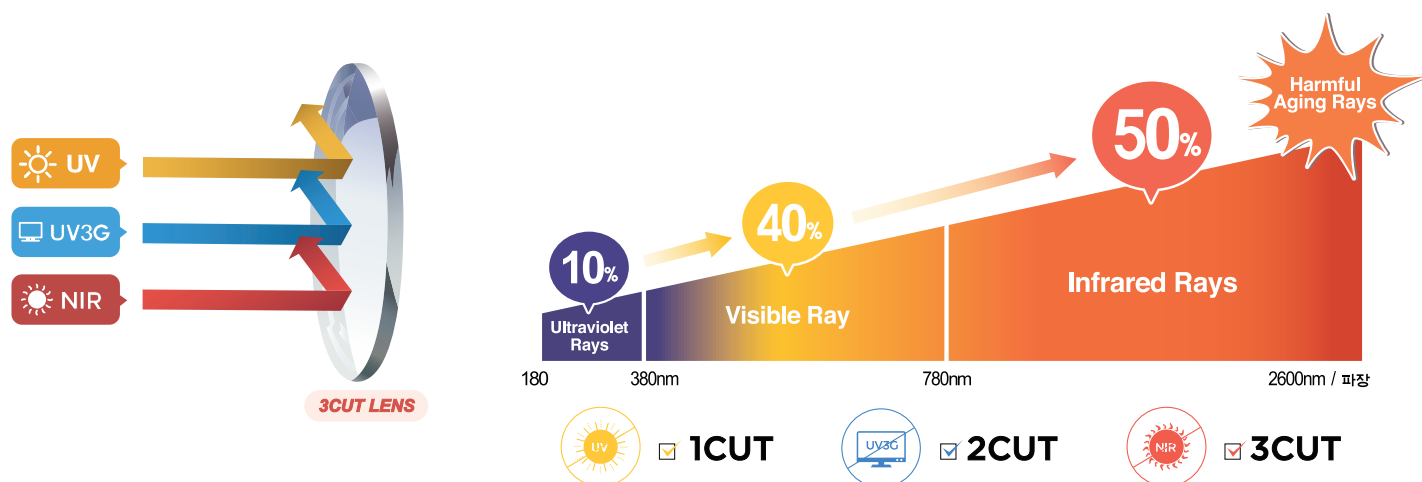
PHOTOSITIONS UV SMART: A unique material developed by Asahi, which blocks harmful UV rays from 400 to 420nm while offering full photochromic performance.

ULTRON: AR coating that is easy to clean, easy to use, glare free, water repellant, oil repellant, dust resistant and fingerprint friendly.

DURON HC: Scratch protection, toughness and durability that adds a long life to your lenses.



Hazard Reduction | Full Spectrum Coverage
Near Infra-Red lens technology from Asahi Lite
Innovation for healthier eyes



Decreases eye fatigue, enhances concentration • Helps prevent retina disease, macular degeneration/cataracts • Slows down aging of skin around eyes • Reduces glare and dazzle

ASAHI-LITE®
JAPANESE QUALITY EYEGGLASS LENSES

ASAHILITE.COM
orders@asahilite.com

We're a relationship company that provides Japanese quality lenses to the eyeglass industry through a unique concept we call "partnership".

Putting quality eyeglass lenses on faces is simply the by-product of what we do. Having fun and creating value is why we do it, and that is the primary focus of Asahi-Lite by Hyalos.

Since 1980, Asahi-Lite Japan has pioneered the eyeglass lens manufacturing process and is excited to be launching, for the first time ever, a full range of Branded Asahi-Lite lenses in Canada.

Asahi-Lite by Hyalos is here and ready to positively impact the eyeglass market.

1980
Founded
in Japan

1987
Created
1.60 Index

1992
Created
1.67 Index

2000
Created
1.74 Index

TODAY
Asahi-Lite is
the #2 supplier of
1.74 lenses Worldwide.
Full-line Launch in
North America